

## Vales Point Power Station Monthly Environmental Data Summary

LICENCE NO	761	<a href="http://www.epa.nsw.gov.au/prpocapp/">http://www.epa.nsw.gov.au/prpocapp/</a>
LICENCE HOLDER	DELTA POWER & ENERGY (VALES POINT) PTY LTD	
REPORTING PERIOD	February 2026	
ADDRESS	VALES ROAD, MANNERING PARK NSW	



### Compliance Summary

Were all licence monitoring limits complied with this month?

Yes

Details of any licence monitoring limit not complied with this month if applicable:

EPL Point	Air/Water/Noise/Other	Pollutant	Value Measured	Licence Limit	Date	Comments

### Monitoring Locations

The location of Environment Protection Licence monitoring points within the Vales Point Power Station premises can be found at <https://www.deltapae.com.au/operations/vales-point-power-station/environmental-licences-and-monitoring> . Click the heading "Vales Point Licence Point Locations" to open the pdf document.

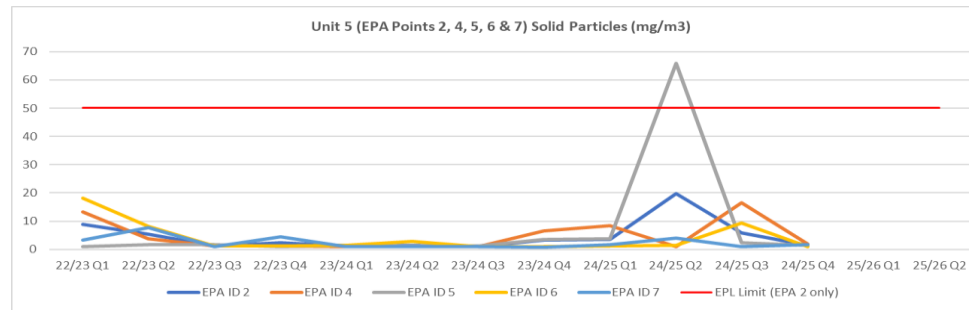
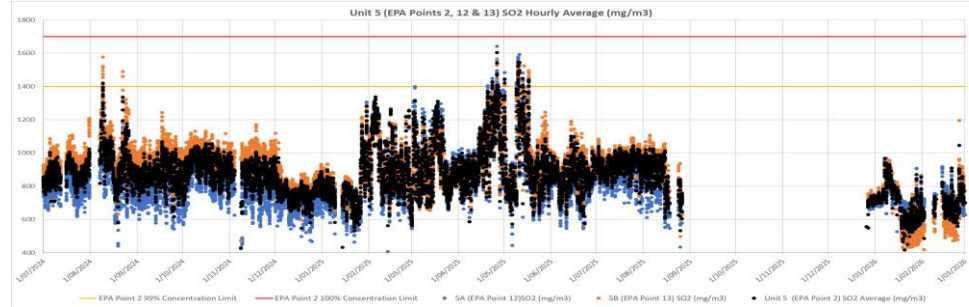
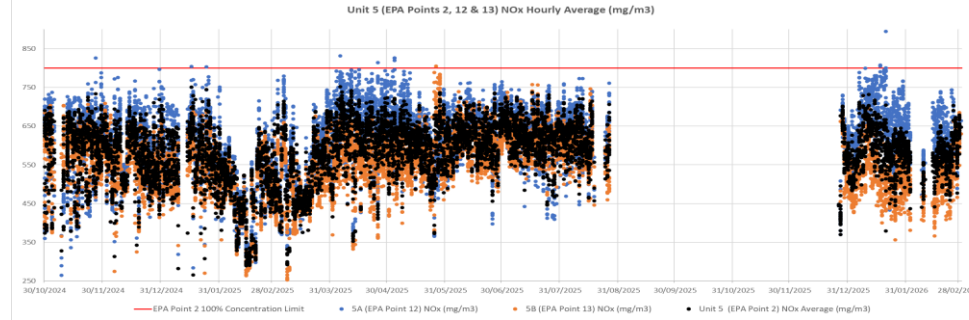
### Comments

It is noted that elevated particulate matter results were recorded across the region as a result of recent bushfire activity on the days that exceedances of the PM2.5 standard were recorded at Wye and Mannering Park in December, January and early February.

**POINT 2 Combined air emissions from boiler 5 via Points 4 to 7 to Point 1 marked and shown as EPA ID 2 on The Plans ("VX837351-1 AND "VX837351-2" 03/06/2020 EPA REFERENCE DOC20/476695 AND DOC20/476695-1).**

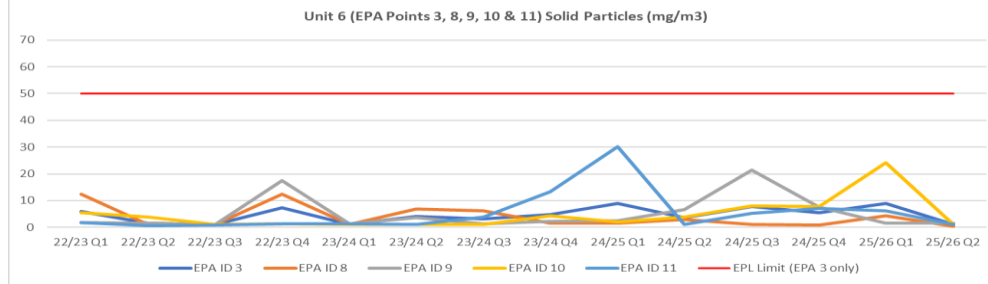
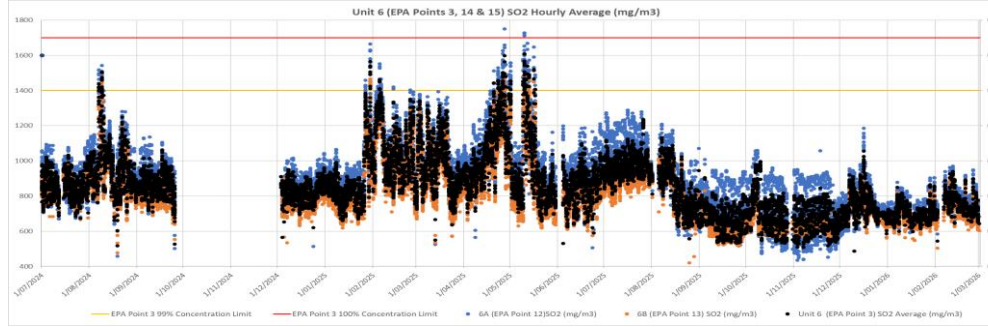
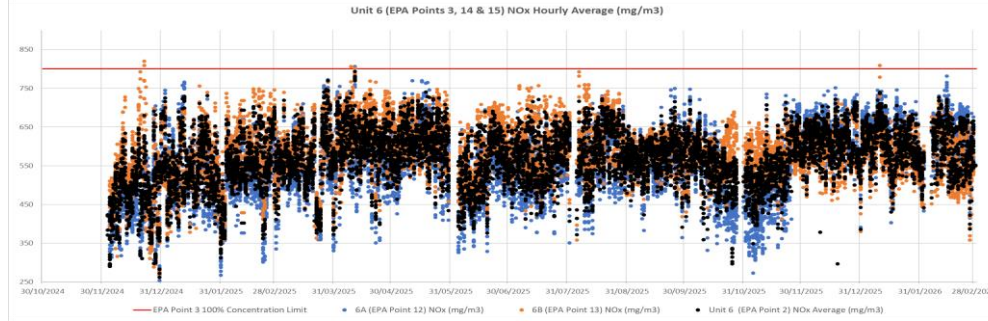
Month	Pollutant	Unit of Measure	Sample/Measurement Frequency	Samples Collected & Analysed	Date Sampled	Lowest Sample Value	Mean of Samples	Highest Sample Value	99 Percentile Concentration Limit	100 Percentile Concentration Limit	Exceed 100% Limit (yes/no)	Comments
Feb-26	Cadmium	(mg/m3)	Every 6 months							0.03	No	
Feb-26	Chlorine	(mg/m3)	Every 6 months							4	No	
Feb-26	Fluorine	(mg/m3)	Every 6 months							30	No	
Feb-26	Hydrogen chloride	(mg/m3)	Every 6 months							50	No	
Feb-26	Mercury	(mg/m3)	Every 6 months							0.03	No	
Feb-26	Nitrogen Oxides	(mg/m3)	Continuous	97.8%	Feb-26	437	570	691		800	No	
Feb-26	Solid Particles	(mg/m3)	Quarterly							50	No	
Feb-26	Sulfur dioxide	(mg/m3)	Continuous	98.1%	Feb-26	485	701	1046	1400	1700	No	
Feb-26	Sulfuric acid mist and sulfur trioxide (as SO3)	(mg/m3)	Every 6 months							100	No	
Feb-26	Type 1 and Type 2 substances in aggregate	(mg/m3)	Every 6 months							0.6	No	
Feb-26	VOC's as n-propane equivalent	(mg/m3)	Every 6 months							8	No	

The 100% Concentration limits in the below graphs apply to EPA Point 2 only. EPA Point 2 is the combined emissions from EPA Points 12 & 13 for NOx and SO2 and EPA Points 4, 5, 6 & 7 for Particulates.



POINT 3 Combined air emissions from boiler 6 via Points 8 to 11 to Point 1 marked and shown as EPA ID 3 on The Plans ("VX837351-1 AND "VX837351-2" 03/06/2020 EPA REFERENCE DOC20/476695 AND DOC20/476695-1).												
Month	Pollutant	Unit of Measure	Sample/Measurement Frequency	Samples Collected & Analysed	Date Sampled	Lowest Sample Value	Mean of Samples	Highest Sample Value	99 Percentile Concentration Limit	100 Percentile Concentration Limit	Exceed 100% Limit (yes/no)	Comments
Feb-26	Cadmium	(mg/m3)	Every 6 months							0.03	No	
Feb-26	Chlorine	(mg/m3)	Every 6 months							4	No	
Feb-26	Fluorine	(mg/m3)	Every 6 months							30	No	
Feb-26	Hydrogen chloride	(mg/m3)	Every 6 months							50	No	
Feb-26	Mercury	(mg/m3)	Every 6 months							0.03	No	
Feb-26	Nitrogen Oxides	(mg/m3)	Continuous	98.2%	Feb-26	387	592	727		800	No	
Feb-26	Solid Particles	(mg/m3)	Quarterly							50	No	
Feb-26	Sulfur dioxide	(mg/m3)	Continuous	98.2%	Feb-26	544	755	938	1400	1700	No	
Feb-26	Sulfuric acid mist and sulfur trioxide (as SO3)	(mg/m3)	Every 6 months							100	No	
Feb-26	Type 1 and Type 2 substances in aggregate	(mg/m3)	Every 6 months							0.6	No	
Feb-26	VOC's as n-propane equivalent	(mg/m3)	Every 6 months							8	No	

The 100% Concentration limits in the below graphs apply to EPA Point 3 only. EPA Point 3 is the combined Emissions from EPA Points 14 & 15 for NOx and SO2 and EPA Points 8, 9, 10 & 11 for Particulates.



POINT 4 Boiler number 5 exhaust - duct A marked and shown as EPA ID 4 on The Plans ("VX837351-1 AND "VX837351-2" 03/06/2020 EPA REFERENCE DOC20/476695 AND DOC20/476695-1).

Month	Pollutant	Unit of Measure	Sample/Measurement Frequency	Samples Collected & Analysed	Date Sampled	Lowest Sample Value	Mean of Samples	Highest Sample Value	99 Percentile Concentration Limit	100 Percentile Concentration Limit	Exceedance (yes/no)	Comments
Feb-26	Cadmium	(mg/m3)	Every 6 months								N/A	
Feb-26	Carbon dioxide	(%)	Every 6 months								N/A	
Feb-26	Chlorine	(mg/m3)	Every 6 months								N/A	
Feb-26	Fluorine	(mg/m3)	Every 6 months								N/A	
Feb-26	Hydrogen chloride	(mg/m3)	Every 6 months								N/A	
Feb-26	Mercury	(mg/m3)	Every 6 months								N/A	
Feb-26	Solid Particles	(mg/m3)	Quarterly								N/A	
Feb-26	Sulfuric acid mist and sulfur trioxide (as SO3)	(mg/m3)	Every 6 months								N/A	
Feb-26	Type 1 and Type 2 substances in aggregate	(mg/m3)	Every 6 months								N/A	
Feb-26	VOC's as n-propane equivalent	(mg/m3)	Every 6 months								N/A	

**POINT 5 Boiler number 5 exhaust - duct B marked and shown as EPA ID 5 on The Plans ("VX837351-1 AND "VX837351-2" 03/06/2020 EPA REFERENCE DOC20/476695 AND DOC20/476695-1).**

Month	Pollutant	Unit of Measure	Sample/Measurement Frequency	Samples Collected & Analysed	Date Sampled	Lowest Sample Value	Mean of Samples	Highest Sample Value	99 Percentile Concentration Limit	100 Percentile Concentration Limit	Exceedance (yes/no)	Comments
Feb-26	Cadmium	(mg/m3)	Every 6 months								N/A	
Feb-26	Mercury	(mg/m3)	Every 6 months								N/A	
Feb-26	Solid Particles	(mg/m3)	Quarterly								N/A	
Feb-26	Type 1 and Type 2 substances in aggregate	(mg/m3)	Every 6 months								N/A	

**POINT 6 Boiler number 5 exhaust - duct C marked and shown as EPA ID 6 on The Plans ("VX837351-1 AND "VX837351-2" 03/06/2020 EPA REFERENCE DOC20/476695 AND DOC20/476695-1).**

Month	Pollutant	Unit of Measure	Sample/Measurement Frequency	Samples Collected & Analysed	Date Sampled	Lowest Sample Value	Mean of Samples	Highest Sample Value	99 Percentile Concentration Limit	100 Percentile Concentration Limit	Exceedance (yes/no)	Comments
Feb-26	Cadmium	(mg/m3)	Every 6 months								N/A	
Feb-26	Carbon dioxide	(%)	Every 6 months								N/A	
Feb-26	Chlorine	(mg/m3)	Every 6 months								N/A	
Feb-26	Fluorine	(mg/m3)	Every 6 months								N/A	
Feb-26	Hydrogen chloride	(mg/m3)	Every 6 months								N/A	
Feb-26	Mercury	(mg/m3)	Every 6 months								N/A	
Feb-26	Solid Particles	(mg/m3)	Quarterly								N/A	
Feb-26	Sulfuric acid mist and sulfur trioxide (as SO3)	(mg/m3)	Every 6 months								N/A	
Feb-26	Type 1 and Type 2 substances in aggregate	(mg/m3)	Every 6 months								N/A	
Feb-26	VOC's as n-propane equivalent	(mg/m3)	Every 6 months								N/A	

**POINT 7 Boiler number 5 exhaust - duct D marked and shown as EPA ID 7 on The Plans ("VX837351-1 AND "VX837351-2" 03/06/2020 EPA REFERENCE DOC20/476695 AND DOC20/476695-1).**

Month	Pollutant	Unit of Measure	Sample/Measurement Frequency	Samples Collected & Analysed	Date Sampled	Lowest Sample Value	Mean of Samples	Highest Sample Value	99 Percentile Concentration Limit	100 Percentile Concentration Limit	Exceedance (yes/no)	Comments
Feb-26	Cadmium	(mg/m3)	Every 6 months								N/A	
Feb-26	Mercury	(mg/m3)	Every 6 months								N/A	
Feb-26	Solid Particles	(mg/m3)	Quarterly								N/A	
Feb-26	Type 1 and Type 2 substances in aggregate	(mg/m3)	Every 6 months								N/A	

**POINT 8 Boiler number 6 exhaust - duct A marked and shown as EPA ID 8 on The Plans ("VX837351-1 AND "VX837351-2" 03/06/2020 EPA REFERENCE DOC20/476695 AND DOC20/476695-1).**

Month	Pollutant	Unit of Measure	Sample/Measurement Frequency	Samples Collected & Analysed	Date Sampled	Lowest Sample Value	Mean of Samples	Highest Sample Value	99 Percentile Concentration Limit	100 Percentile Concentration Limit	Exceedance (yes/no)	Comments
Feb-26	Cadmium	(mg/m3)	Every 6 months								N/A	
Feb-26	Carbon dioxide	(%)	Every 6 months								N/A	
Feb-26	Chlorine	(mg/m3)	Every 6 months								N/A	
Feb-26	Fluorine	(mg/m3)	Every 6 months								N/A	
Feb-26	Hydrogen chloride	(mg/m3)	Every 6 months								N/A	
Feb-26	Mercury	(mg/m3)	Every 6 months								N/A	
Feb-26	Solid Particles	(mg/m3)	Quarterly								N/A	
Feb-26	Sulfuric acid mist and sulfur trioxide (as SO3)	(mg/m3)	Every 6 months								N/A	
Feb-26	Type 1 and Type 2 substances in aggregate	(mg/m3)	Every 6 months								N/A	
Feb-26	VOC's as n-propane equivalent	(mg/m3)	Every 6 months								N/A	

**POINT 9 Boiler number 6 exhaust - duct B marked and shown as EPA ID 9 on The Plans ("VX837351-1 AND "VX837351-2" 03/06/2020 EPA REFERENCE DOC20/476695 AND DOC20/476695-1).**

Month	Pollutant	Unit of Measure	Sample/Measurement Frequency	Samples Collected & Analysed	Date Sampled	Lowest Sample Value	Mean of Samples	Highest Sample Value	99 Percentile Concentration Limit	100 Percentile Concentration Limit	Exceedance (yes/no)	Comments
Feb-26	Cadmium	(mg/m3)	Every 6 months								N/A	
Feb-26	Mercury	(mg/m3)	Every 6 months								N/A	
Feb-26	Solid Particles	(mg/m3)	Quarterly								N/A	
Feb-26	Type 1 and Type 2 substances in aggregate	(mg/m3)	Every 6 months								N/A	

**POINT 10** Boiler number 6 exhaust - duct C marked and shown as EPA ID 10 on The Plans ("VX837351-1 AND "VX837351-2" 03/06/2020 EPA REFERENCE DOC20/476695 AND DOC20/476695-1).

Month	Pollutant	Unit of Measure	Sample/Measurement Frequency	Samples Collected & Analysed	Date Sampled	Lowest Sample Value	Mean of Samples	Highest Sample Value	99 Percentile Concentration Limit	100 Percentile Concentration Limit	Exceedance (yes/no)	Comments
Feb-26	Cadmium	(mg/m3)	Every 6 months								N/A	
Feb-26	Carbon dioxide	(%)	Every 6 months								N/A	
Feb-26	Chlorine	(mg/m3)	Every 6 months								N/A	
Feb-26	Fluorine	(mg/m3)	Every 6 months								N/A	
Feb-26	Hydrogen chloride	(mg/m3)	Every 6 months								N/A	
Feb-26	Mercury	(mg/m3)	Every 6 months								N/A	
Feb-26	Solid Particles	(mg/m3)	Quarterly								N/A	
Feb-26	Sulfuric acid mist and sulfur trioxide (as SO3)	(mg/m3)	Every 6 months								N/A	
Feb-26	Type 1 and Type 2 substances in aggregate	(mg/m3)	Every 6 months								N/A	
Feb-26	VOC's as n-propane equivalent	(mg/m3)	Every 6 months								N/A	

**POINT 11** Boiler number 6 exhaust - duct D marked and shown as EPA ID 11 on The Plans ("VX837351-1 AND "VX837351-2" 03/06/2020 EPA REFERENCE DOC20/476695 AND DOC20/476695-1).

Month	Pollutant	Unit of Measure	Sample/Measurement Frequency	Samples Collected & Analysed	Date Sampled	Lowest Sample Value	Mean of Samples	Highest Sample Value	99 Percentile Concentration Limit	100 Percentile Concentration Limit	Exceedance (yes/no)	Comments
Feb-26	Cadmium	(mg/m3)	Every 6 months								N/A	
Feb-26	Mercury	(mg/m3)	Every 6 months								N/A	
Feb-26	Solid Particles	(mg/m3)	Quarterly								N/A	
Feb-26	Type 1 and Type 2 substances in aggregate	(mg/m3)	Every 6 months								N/A	

**POINT 12** Boiler number 5 combined exhaust - duct A and B (points 4 and 5) marked and shown as EPA ID 12 on The Plans ("VX837351-1 AND "VX837351-2" 03/06/2020 EPA REFERENCE DOC20/476695 AND DOC20/476695-1).

Month	Pollutant	Unit of Measure	Sample/Measurement Frequency	Samples Collected & Analysed	Date Sampled	Lowest Sample Value	Mean of Samples	Highest Sample Value	99 Percentile Concentration Limit	100 Percentile Concentration Limit	Exceedance (yes/no)	Comments
Feb-26	Nitrogen Oxides	(mg/m3)	Continuous	98.1%	Feb-26	473	622	744			N/A	
Feb-26	Sulfur dioxide	(mg/m3)	Continuous	98.1%	Feb-26	551	736	918			N/A	

**POINT 13** Boiler number 5 combined exhaust - duct C and D (points 6 and 7) marked and shown as EPA ID 13 on The Plans ("VX837351-1 AND "VX837351-2" 03/06/2020 EPA REFERENCE DOC20/476695 AND DOC20/476695-1).

Month	Pollutant	Unit of Measure	Sample/Measurement Frequency	Samples Collected & Analysed	Date Sampled	Lowest Sample Value	Mean of Samples	Highest Sample Value	99 Percentile Concentration Limit	100 Percentile Concentration Limit	Exceedance (yes/no)	Comments
Feb-26	Nitrogen Oxides	(mg/m3)	Continuous	97.6%	Feb-26	366	518	685			N/A	
Feb-26	Sulfur dioxide	(mg/m3)	Continuous	98.1%	Feb-26	419	667	1196			N/A	

**POINT 14** Boiler number 6 combined exhaust - duct A and B (points 8 and 9) marked and shown as EPA ID 14 on The Plans ("VX837351-1 AND "VX837351-2" 03/06/2020 EPA REFERENCE DOC20/476695 AND DOC20/476695-1).

Month	Pollutant	Unit of Measure	Sample/Measurement Frequency	Samples Collected & Analysed	Date Sampled	Lowest Sample Value	Mean of Samples	Highest Sample Value	99 Percentile Concentration Limit	100 Percentile Concentration Limit	Exceedance (yes/no)	Comments
Feb-26	Nitrogen Oxides	(mg/m3)	Continuous	99.0%	Feb-26	415	611	781			N/A	
Feb-26	Sulfur dioxide	(mg/m3)	Continuous	99.0%	Feb-26	584	793	983			N/A	

**POINT 15** Boiler number 6 combined exhaust - duct C and D (points 10 and 11) marked and shown as EPA ID 12 on The Plans ("VX837351-1 AND "VX837351-2" 03/06/2020 EPA REFERENCE DOC20/476695 AND DOC20/476695-1).

Month	Pollutant	Unit of Measure	Sample/Measurement Frequency	Samples Collected & Analysed	Date Sampled	Lowest Sample Value	Mean of Samples	Highest Sample Value	99 Percentile Concentration Limit	100 Percentile Concentration Limit	Exceedance (yes/no)	Comments
Feb-26	Nitrogen Oxides	(mg/m3)	Continuous	97.4%	Feb-26	358	572	723			N/A	
Feb-26	Sulfur dioxide	(mg/m3)	Continuous	97.4%	Feb-26	504	716	907			N/A	

**POINT 22** Discharge of cooling water from the cooling water outlet canal to Wyee Bay marked and shown as EPA ID 22 on The Plans ("VX837351-1 AND "VX837351-2" 03/06/2020 EPA REFERENCE DOC20/476695 AND DOC20/476695-1).

Month	Pollutant	Unit of Measure	Sample/Measurement Frequency	Samples Collected & Analysed	Date Sampled	Lowest Sample Value	Mean of Samples	Highest Sample Value	98.5 Percentile Concentration Limit	100 Percentile Concentration Limit	Exceed 100% Limit (yes/no)	Comments
Feb-26	Chlorine (free residual)	(mg/L)	Monthly during discharge	1	4/02/2026	0	0	0		0.2	No	
Feb-26	Copper	(mg/L)	Monthly during discharge	1	4/02/2026	<0.002	<0.002	<0.002		0.005	No	
Feb-26	Iron	(mg/L)	Monthly during discharge	1	4/02/2026	0.14	0.14	0.14		0.3	No	
Feb-26	Oil and Grease	Visible	Continuous during discharge	100%	Feb-26	NIL	NIL	NIL				
Feb-26	Selenium	(mg/L)	Monthly during discharge	1	4/02/2026	<0.001	<0.001	<0.001		0.005	No	
Feb-26	Temperature	(°C)	Continuous during discharge	100%	Feb-26	25.4	31.0	35.8	35	37.5	No	

**POINT 23** Discharge of supernatant water from the ash dam to the cooling water outlet canal to Wyee Bay marked and shown as EPA ID 23 on The Plans ("VX837351-1 AND "VX837351-2" 03/06/2020 EPA REFERENCE DOC20/476695 AND DOC20/476695-1).

Month	Pollutant	Unit of Measure	Sample/Measurement Frequency	Samples Collected & Analysed	Date Sampled	Lowest Sample Value	Mean of Samples	Highest Sample Value	99 Percentile Concentration Limit	100 Percentile Concentration Limit	Exceedance (yes/no)	Comments
Feb-26	Aluminium	(mg/L)	Monthly during discharge	1	4/02/2026	0.07	0.07	0.07				
Feb-26	Ammonia	(mg/L)	Monthly during discharge	1	4/02/2026	0.030	0.030	0.030				
Feb-26	Arsenic (III)	(mg/L)	Monthly during discharge	1	4/02/2026	<0.001	<0.001	<0.001				
Feb-26	Arsenic (V)	(mg/L)	Monthly during discharge	1	4/02/2026	0.006	0.006	0.006				
Feb-26	Cadmium	(mg/L)	Monthly during discharge	1	4/02/2026	<0.0002	<0.0002	<0.0002				
Feb-26	Chromium (trivalent)	(mg/L)	Monthly during discharge	1	4/02/2026	0.007	0.007	0.007				
Feb-26	Chromium (VI) Compounds	(mg/L)	Monthly during discharge	1	4/02/2026	0.01	0.01	0.01				
Feb-26	Copper	(mg/L)	Monthly during discharge	1	4/02/2026	0.001	0.001	0.001				
Feb-26	Iron	(mg/L)	Monthly during discharge	1	4/02/2026	0.11	0.11	0.11				
Feb-26	Lead	(mg/L)	Monthly during discharge	1	4/02/2026	<0.002	<0.002	<0.002				
Feb-26	Manganese	(mg/L)	Monthly during discharge	1	4/02/2026	0.014	0.014	0.014				
Feb-26	Nickel	(mg/L)	Monthly during discharge	1	4/02/2026	<0.002	<0.002	<0.002				
Feb-26	Nitrate + nitrite (oxidised nitrogen)	(mg/L)	Monthly during discharge	1	4/02/2026	0.06	0.06	0.06				
Feb-26	Nitrogen	(mg/L)	Monthly during discharge	1	4/02/2026	0.4	0.4	0.4				
Feb-26	pH	pH	Monthly during discharge	1	4/02/2026	8.41	8.41	8.41		6.5 - 9.5	No	
Feb-26	Phosphorus	(mg/L)	Monthly during discharge	1	4/02/2026	0.06	0.06	0.06				
Feb-26	Reactive Phosphorus	(mg/L)	Monthly during discharge	1	4/02/2026	0.02	0.02	0.02				
Feb-26	Selenium	(mg/L)	Monthly during discharge	1	4/02/2026	0.031	0.031	0.031				
Feb-26	Total Kjeldahl Nitrogen	(mg/L)	Monthly during discharge	1	4/02/2026	0.3	0.3	0.3				
Feb-26	Total Suspended Solids	(mg/L)	Monthly during discharge	1	4/02/2026	<5	<5	<5		50	No	
Feb-26	Vanadium	(mg/L)	Monthly during discharge	1	4/02/2026	0.031	0.031	0.031				
Feb-26	Zinc	(mg/L)	Monthly during discharge	1	4/02/2026	0.008	0.008	0.008				

**POINT 24 Discharge of seepage water from the ash dam rehabilitation area to Mannering Bay marked and shown as EPA ID 24 on The Plans ("VX837351-1 AND "VX837351-2" 03/06/2020 EPA REFERENCE DOC20/476695 AND DOC20/476695-1).**

Month	Pollutant	Unit of Measure	Sample/Measurement Frequency	Samples Collected & Analysed	Date Sampled	Lowest Sample Value	Mean of Samples	Highest Sample Value	Discharge (yes/no)	100 Percentile Concentration Limit	Exceedance (yes/no)	Comments
Feb-26	Aluminium	(mg/L)	Monthly during discharge	1	4/02/2026	0.10	0.10	0.10	Yes			
Feb-26	Ammonia	(mg/L)	Monthly during discharge	1	4/02/2026	1.20	1.20	1.20	Yes			
Feb-26	Arsenic (III)	(mg/L)	Monthly during discharge	1	4/02/2026	<0.001	<0.001	<0.001	Yes			
Feb-26	Arsenic (V)	(mg/L)	Monthly during discharge	1	4/02/2026	0.003	0.003	0.003	Yes			
Feb-26	Cadmium	(mg/L)	Monthly during discharge	1	4/02/2026	<0.0002	<0.0002	<0.0002	Yes			
Feb-26	Chromium (trivalent)	(mg/L)	Monthly during discharge	1	4/02/2026	<0.005	<0.005	<0.005	Yes			
Feb-26	Chromium (VI) Compounds	(mg/L)	Monthly during discharge	1	4/02/2026	<0.005	<0.005	<0.005	Yes			
Feb-26	Copper	(mg/L)	Monthly during discharge	1	4/02/2026	<0.002	<0.002	<0.002	Yes			
Feb-26	Iron	(mg/L)	Monthly during discharge	1	4/02/2026	0.14	0.14	0.14	Yes			
Feb-26	Lead	(mg/L)	Monthly during discharge	1	4/02/2026	<0.002	<0.002	<0.002	Yes			
Feb-26	Manganese	(mg/L)	Monthly during discharge	1	4/02/2026	0.082	0.082	0.082	Yes			
Feb-26	Nickel	(mg/L)	Monthly during discharge	1	4/02/2026	<0.002	<0.002	<0.002	Yes			
Feb-26	Nitrate + nitrite (oxidised nitrogen)	(mg/L)	Monthly during discharge	1	4/02/2026	0.44	0.44	0.44	Yes			
Feb-26	Nitrogen	(mg/L)	Monthly during discharge	1	4/02/2026	1.30	1.30	1.30	Yes			
Feb-26	pH	pH	Monthly during discharge	1	4/02/2026	8.08	8.08	8.08	Yes	6.5 - 9.5	No	
Feb-26	Phosphorus	(mg/L)	Monthly during discharge	1	4/02/2026	<0.05	<0.05	<0.05	Yes			
Feb-26	Reactive Phosphorus	(mg/L)	Monthly during discharge	1	4/02/2026	0.006	0.006	0.006	Yes			
Feb-26	Selenium	(mg/L)	Monthly during discharge	1	4/02/2026	<0.002	<0.002	<0.002	Yes			
Feb-26	Total Kjeldahl Nitrogen	(mg/L)	Monthly during discharge	1	4/02/2026	0.80	0.80	0.80	Yes			
Feb-26	Total Suspended Solids	(mg/L)	Monthly during discharge	1	4/02/2026	<5	<5	<5	Yes	50	No	
Feb-26	Vanadium	(mg/L)	Monthly during discharge	1	4/02/2026	0.01	0.01	0.01	Yes			
Feb-26	Zinc	(mg/L)	Monthly during discharge	1	4/02/2026	0.018	0.018	0.018	Yes			

**POINT 25 Discharge of over boarded water from the ash dam to Mannering Bay marked and shown as EPA ID 25 on The Plans ("VX837351-1 AND "VX837351-2" 03/06/2020 EPA REFERENCE DOC20/476695 AND DOC20/476695-1).**

Month	Pollutant	Unit of Measure	Sample/Measurement Frequency	Samples Collected & Analysed	Date Sampled	Lowest Sample Value	Mean of Samples	Highest Sample Value	Discharge (yes/no)	100 Percentile Concentration Limit	Exceedance (yes/no)	Comments
Feb-26	Aluminium	(mg/L)	Daily for any discharge >2 hrs						No			
Feb-26	Ammonia	(mg/L)	Daily for any discharge >2 hrs						No			
Feb-26	Arsenic (III)	(mg/L)	Daily for any discharge >2 hrs						No			
Feb-26	Arsenic (V)	(mg/L)	Daily for any discharge >2 hrs						No			
Feb-26	Cadmium	(mg/L)	Daily for any discharge >2 hrs						No			
Feb-26	Chromium (trivalent)	(mg/L)	Daily for any discharge >2 hrs						No			
Feb-26	Chromium (VI) Compounds	(mg/L)	Daily for any discharge >2 hrs						No			
Feb-26	Copper	(mg/L)	Daily for any discharge >2 hrs						No			
Feb-26	Iron	(mg/L)	Daily for any discharge >2 hrs						No			
Feb-26	Lead	(mg/L)	Daily for any discharge >2 hrs						No			
Feb-26	Manganese	(mg/L)	Daily for any discharge >2 hrs						No			
Feb-26	Nickel	(mg/L)	Daily for any discharge >2 hrs						No			
Feb-26	Nitrate + nitrite (oxidised nitrogen)	(mg/L)	Daily for any discharge >2 hrs						No			
Feb-26	Nitrogen	(mg/L)	Daily for any discharge >2 hrs						No			
Feb-26	pH	pH	Daily for any discharge >2 hrs						No	6.5 - 9	No	
Feb-26	Phosphorus	(mg/L)	Daily for any discharge >2 hrs						No			
Feb-26	Reactive Phosphorus	(mg/L)	Daily for any discharge >2 hrs						No			
Feb-26	Selenium	(mg/L)	Daily for any discharge >2 hrs						No			
Feb-26	Total Kjeldahl Nitrogen	(mg/L)	Daily for any discharge >2 hrs						No			
Feb-26	Total Suspended Solids	(mg/L)	Daily for any discharge >2 hrs						No	50	No	
Feb-26	Vanadium	(mg/L)	Daily for any discharge >2 hrs						No			
Feb-26	Zinc	(mg/L)	Daily for any discharge >2 hrs						No			

**POINT 30** Groundwater quality monitoring bore marked and shown as EPA ID 30 on The Plans ("VX837351-1 AND "VX837351-2" 03/06/2020 EPA REFERENCE DOC20/476695 AND DOC20/476695-1).

Month	Pollutant	Unit of Measure	Sample/Measurement Frequency	Samples Collected & Analysed	Date Sampled	Lowest Sample Value	Mean of Samples	Highest Sample Value	99 Percentile Concentration Limit	100 Percentile Concentration Limit	Exceedance (yes/no)	Comments
Feb-26	Aluminium	(mg/L)	Quarterly									
Feb-26	Ammonia	(mg/L)	Quarterly									
Feb-26	Arsenic (III)	(mg/L)	Quarterly									
Feb-26	Arsenic (V)	(mg/L)	Quarterly									
Feb-26	Cadmium	(mg/L)	Quarterly									
Feb-26	Chromium (trivalent)	(mg/L)	Quarterly									
Feb-26	Chromium (VI) Compounds	(mg/L)	Quarterly									
Feb-26	Copper	(mg/L)	Quarterly									
Feb-26	Electrical Conductivity	(us/cm)	Quarterly									
Feb-26	Iron	(mg/L)	Quarterly									
Feb-26	Lead	(mg/L)	Quarterly									
Feb-26	Magnesium	(mg/L)	Quarterly									Next round of quarterly groundwater sampling scheduled for April 2026
Feb-26	Manganese	(mg/L)	Quarterly									
Feb-26	Nickel	(mg/L)	Quarterly									
Feb-26	pH	pH	Quarterly									
Feb-26	Potassium	(mg/L)	Quarterly									
Feb-26	Selenium	(mg/L)	Quarterly									
Feb-26	Sodium	(mg/L)	Quarterly									
Feb-26	Standing Water Level	(m)	Quarterly									
Feb-26	Vanadium	(mg/L)	Quarterly									
Feb-26	Zinc	(mg/L)	Quarterly									

**POINT 31** Groundwater quality monitoring bore marked and shown as EPA ID 31 on The Plans ("VX837351-1 AND "VX837351-2" 03/06/2020 EPA REFERENCE DOC20/476695 AND DOC20/476695-1).

Month	Pollutant	Unit of Measure	Sample/Measurement Frequency	Samples Collected & Analysed	Date Sampled	Lowest Sample Value	Mean of Samples	Highest Sample Value	99 Percentile Concentration Limit	100 Percentile Concentration Limit	Exceedance (yes/no)	Comments
Feb-26	Aluminium	(mg/L)	Quarterly									
Feb-26	Ammonia	(mg/L)	Quarterly									
Feb-26	Arsenic (III)	(mg/L)	Quarterly									
Feb-26	Arsenic (V)	(mg/L)	Quarterly									
Feb-26	Cadmium	(mg/L)	Quarterly									
Feb-26	Chromium (trivalent)	(mg/L)	Quarterly									
Feb-26	Chromium (VI) Compounds	(mg/L)	Quarterly									
Feb-26	Copper	(mg/L)	Quarterly									
Feb-26	Electrical Conductivity	(us/cm)	Quarterly									
Feb-26	Iron	(mg/L)	Quarterly									
Feb-26	Lead	(mg/L)	Quarterly									
Feb-26	Magnesium	(mg/L)	Quarterly									Next round of quarterly groundwater sampling scheduled for April 2026
Feb-26	Manganese	(mg/L)	Quarterly									
Feb-26	Nickel	(mg/L)	Quarterly									
Feb-26	pH	pH	Quarterly									
Feb-26	Potassium	(mg/L)	Quarterly									
Feb-26	Selenium	(mg/L)	Quarterly									
Feb-26	Sodium	(mg/L)	Quarterly									
Feb-26	Standing Water Level	(m)	Quarterly									
Feb-26	Vanadium	(mg/L)	Quarterly									
Feb-26	Zinc	(mg/L)	Quarterly									

POINT 32 Groundwater quality monitoring bore marked and shown as EPA ID 32 on The Plans ("VX837351-1 AND "VX837351-2" 03/06/2020 EPA REFERENCE DOC20/476695 AND DOC20/476695-1).												
Month	Pollutant	Unit of Measure	Sample/Measurement Frequency	Samples Collected & Analysed	Date Sampled	Lowest Sample Value	Mean of Samples	Highest Sample Value	99 Percentile Concentration Limit	100 Percentile Concentration Limit	Exceedance (yes/no)	Comments
Feb-26	Aluminium	(mg/L)	Quarterly									
Feb-26	Ammonia	(mg/L)	Quarterly									
Feb-26	Arsenic (III)	(mg/L)	Quarterly									
Feb-26	Arsenic (V)	(mg/L)	Quarterly									
Feb-26	Cadmium	(mg/L)	Quarterly									
Feb-26	Chromium (trivalent)	(mg/L)	Quarterly									
Feb-26	Chromium (VI) Compounds	(mg/L)	Quarterly									
Feb-26	Copper	(mg/L)	Quarterly									
Feb-26	Electrical Conductivity	(us/cm)	Quarterly									
Feb-26	Iron	(mg/L)	Quarterly									
Feb-26	Lead	(mg/L)	Quarterly									
Feb-26	Magnesium	(mg/L)	Quarterly									
Feb-26	Manganese	(mg/L)	Quarterly									Next round of quarterly groundwater sampling scheduled for April 2026
Feb-26	Nickel	(mg/L)	Quarterly									
Feb-26	pH	pH	Quarterly									
Feb-26	Potassium	(mg/L)	Quarterly									
Feb-26	Selenium	(mg/L)	Quarterly									
Feb-26	Sodium	(mg/L)	Quarterly									
Feb-26	Standing Water Level	(m)	Quarterly									
Feb-26	Vanadium	(mg/L)	Quarterly									
Feb-26	Zinc	(mg/L)	Quarterly									

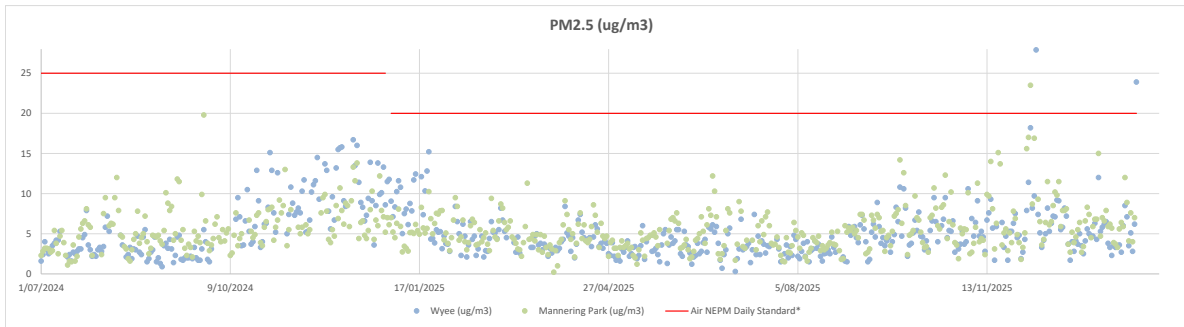
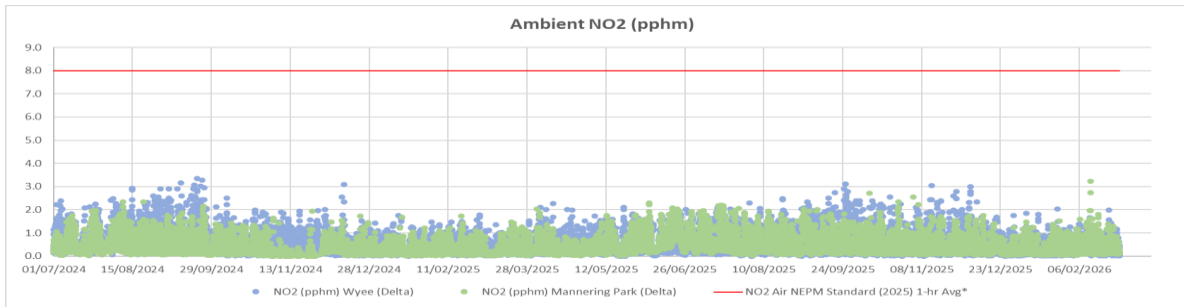
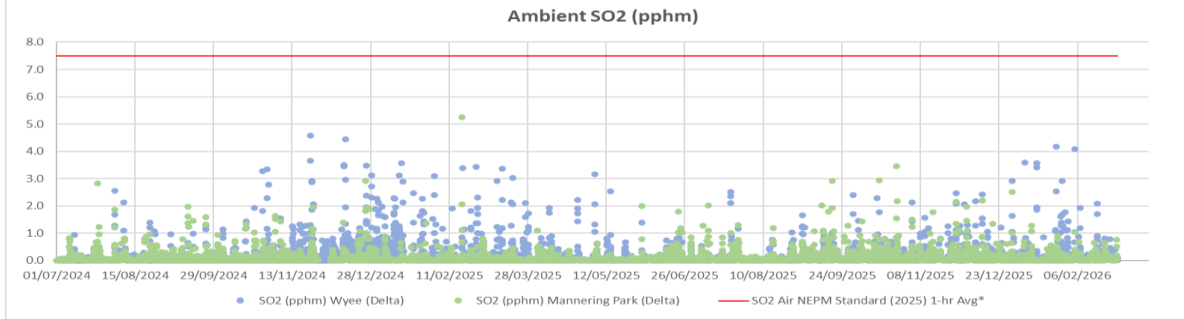
POINT 33 Groundwater quality monitoring bore marked and shown as EPA ID 33 on The Plans ("VX837351-1 AND "VX837351-2" 03/06/2020 EPA REFERENCE DOC20/476695 AND DOC20/476695-1).												
Month	Pollutant	Unit of Measure	Sample/Measurement Frequency	Samples Collected & Analysed	Date Sampled	Lowest Sample Value	Mean of Samples	Highest Sample Value	99 Percentile Concentration Limit	100 Percentile Concentration Limit	Exceedance (yes/no)	Comments
Feb-26	Aluminium	(mg/L)	Quarterly									
Feb-26	Ammonia	(mg/L)	Quarterly									
Feb-26	Arsenic (III)	(mg/L)	Quarterly									
Feb-26	Arsenic (V)	(mg/L)	Quarterly									
Feb-26	Cadmium	(mg/L)	Quarterly									
Feb-26	Chromium (trivalent)	(mg/L)	Quarterly									
Feb-26	Chromium (VI) Compounds	(mg/L)	Quarterly									
Feb-26	Copper	(mg/L)	Quarterly									
Feb-26	Electrical Conductivity	(us/cm)	Quarterly									
Feb-26	Iron	(mg/L)	Quarterly									
Feb-26	Lead	(mg/L)	Quarterly									
Feb-26	Magnesium	(mg/L)	Quarterly									
Feb-26	Manganese	(mg/L)	Quarterly									Next round of quarterly groundwater sampling scheduled for April 2026
Feb-26	Nickel	(mg/L)	Quarterly									
Feb-26	pH	pH	Quarterly									
Feb-26	Potassium	(mg/L)	Quarterly									
Feb-26	Selenium	(mg/L)	Quarterly									
Feb-26	Sodium	(mg/L)	Quarterly									
Feb-26	Standing Water Level	(m)	Quarterly									
Feb-26	Vanadium	(mg/L)	Quarterly									
Feb-26	Zinc	(mg/L)	Quarterly									

POINT 34 Groundwater quality monitoring bore marked and shown as EPA ID 33 on The Plans ("VX837351-1 AND "VX837351-2" 03/06/2020 EPA REFERENCE DOC20/476695 AND DOC20/476695-1).

Month	Pollutant	Unit of Measure	Sample/Masurement Frequency	Samples Collected & Analysed	Date Sampled	Lowest Sample Value	Mean of Samples	Highest Sample Value	99 Percentile Concentration Limit	100 Percentile Concentration Limit	Exceedance (yes/no)	Comments
Feb-26	Aluminium	(mg/L)	Quarterly									
Feb-26	Ammonia	(mg/L)	Quarterly									
Feb-26	Arsenic (III)	(mg/L)	Quarterly									
Feb-26	Arsenic (V)	(mg/L)	Quarterly									
Feb-26	Cadmium	(mg/L)	Quarterly									
Feb-26	Chromium (trivalent)	(mg/L)	Quarterly									
Feb-26	Chromium (VI) Compounds	(mg/L)	Quarterly									
Feb-26	Copper	(mg/L)	Quarterly									
Feb-26	Electrical Conductivity	(us/cm)	Quarterly									
Feb-26	Iron	(mg/L)	Quarterly									
Feb-26	Lead	(mg/L)	Quarterly									
Feb-26	Magnesium	(mg/L)	Quarterly									
Feb-26	Manganese	(mg/L)	Quarterly									Next round of quarterly groundwater sampling scheduled for April 2026
Feb-26	Nickel	(mg/L)	Quarterly									
Feb-26	pH	pH	Quarterly									
Feb-26	Potassium	(mg/L)	Quarterly									
Feb-26	Selenium	(mg/L)	Quarterly									
Feb-26	Sodium	(mg/L)	Quarterly									
Feb-26	Standing Water Level	(m)	Quarterly									
Feb-26	Vanadium	(mg/L)	Quarterly									
Feb-26	Zinc	(mg/L)	Quarterly									

## Ambient Air Quality Graphs

POINTS 16 & 35 Meteorological and ambient air quality monitoring stations at Wyee & Mannering Park marked and shown as EPA ID 16 & EPA ID 35 respectively on The Plan.



### GENERAL COMMENTS

\*For more information about the Australian Governments National Environment Protection (Ambient Air Quality) Measure (Air NEPM) visit <<https://www.nepc.gov.au/nepms/ambient-air-quality>>. changed from 25ug/m<sup>3</sup> to 20ug/m<sup>3</sup> in 2025. This reduction is reflected in the PM<sub>2.5</sub> graph above.

\*\*The Air NEPM daily standard for PM<sub>2.5</sub>